

Provide payment information

Payment Enclosed (Do not send cash)

Cheque Money Order
Make cheques payable to: Royal & McPherson Society
Credit Card: Visa Mastercard American Express

NAME AS IT APPEARS ON CREDIT CARD

CREDIT CARD NUMBER

EXPIRY

SIGNATURE

Provide mailing address

EMSI and its box office do not rent, sell or exchange your contact information. It is used only for EMSI Patron Services, communications and fundraising.

MEMBER 1

MEMBER 2

ADDRESS

PHONE

EMAIL

McPherson Box Office Ticket Processing Charges

Place your order

- \$1.50 per ticket for phone orders
- \$3.00 per order for online single tickets
- no charge for in-person/faxed/mail-in orders

Buy a membership, make a donation

- no charge for membership card purchase/ mailing (allow 2 wks)
- donation receipts mailed quarterly by EMSI

Have your order mailed to you

- \$2.50 for mail-out of non-subscription orders (allow 2 wks)
- no charge for mail-out of subscription orders (allow 2 wks)
- no charge for box office pickup or at door on concert night

Need help?

Ticket orders and related inquiries

Phone: 250-386-6121 Fax: 250-361-0805 Web: www.rmts.bc.ca

McPherson Box Office #3 Centennial Square
Victoria BC V8W 1P5
10am–5pm Mon to Sat

Royal Box Office 805 Broughton St.
Victoria BC V8W 1E5
10am–1:30pm, 2–5pm Mon to Sat

Season brochures, donation receipts, and general inquiries

EMSI Patron Services
Phone: 250-882-5058 (Please leave a message)
Email: info@earlymusicsocietyoftheislands.ca



Les Boréades de Montréal

Support EMSI

We invite you to become a member of EMSI and/or to make a tax-deductible donation. Ticket sales cover only a portion of EMSI's expenses. It is with the help of generous music lovers that we are able to present the highest quality Early Music concerts.

Donation categories

Friend	up to \$49	Patron	\$500–999
Believer	\$50–99	Sponsor	\$1000–2499
Donor	\$100–249	Benefactor	\$2500+
Sustainer	\$250–499		

EMSI membership benefits

- EMSI ticket discounts of up to 30%
- Pacific Baroque Festival, Victoria Philharmonic Choir, Victoria Baroque Players discounts
- discount on Early Music America subscription and magazine
- CD discount at EMSI concerts
- free music-related ads in newsletters and concert programmes
- a voice in running the society with your vote at the Annual General Meeting (Memberships not eligible for tax receipts)

Annual Membership

Adult \$30 Senior \$20 Student \$10
Family \$50 (2 adults)



Monica Huggett

Tickets on sale 2 May 2016.

Member \$22/\$28, Adult \$30/\$35,
Senior (65+)/Student (full-time) \$25/\$30

Group Rates 10% discount on adult single ticket pricing for groups of 10 or more. Call or email EMSI to arrange.

Rush Tickets At the door with student card \$8 (\$10 for Special and NBMP events)

Bring-a-Teen-for-Free No charge for teen accompanying adult or senior ticket holder at non-sold-out concerts. Call or email EMSI to arrange.

Subscribe and save up to 30%!

Use the attached subscription order form. Additional order forms available from our website at www.earlymusicsocietyoftheislands.ca.

Single tickets

As well as through the box office, single tickets are available two weeks prior to each concert at Ivy's Bookshop, Munro's Books, and Long & McQuade.

Venues

Alix Goolden Performance Hall, Victoria Conservatory of Music, 907 Pandora (at Quadra).

Christ Church Cathedral, 930 Burdett Ave.

Doors open at 6:45pm, pre-concert talks begin at 7:10pm, concerts at 8pm. Please note the 3pm matinee on Sunday, 5 February.



Raquel Andueza and La Galanía

COVER IMAGE
Mrs. Froude,
née Phyllis Hurrell,
Sir Joshua Reynolds
(1723-92), oil on canvas.



Early Music Society OF THE ISLANDS

EMSI, based in Victoria BC, is a non-profit society committed to bringing audiences the very best in historically informed performances of music composed before 1800. All concerts feature period instruments.

Since 1985, EMSI has presented a who's who of the international early music scene: Anonymous 4, Nancy Argenta, Baltimore Consort, the Harp Consort, Monica Huggett, John Holloway, Ton Koopman, London Baroque, Orlando Consort, Jordi Savall, Tafelmusik, Sequentia, Red Priest, Fretwork, Daniel Taylor, Concerto Köln, Ensemble Clement Janequin, Dame Emma Kirkby, Stile Antico, London Handel Players, Boston Early Music Festival, Collegium Vocale Gent and a host of others.

EMSI SEASON SPONSORS



NBMP SPONSORS



Web: www.earlymusicsocietyoftheislands.ca

Email: info@earlymusicsocietyoftheislands.ca

Phone: 250-882-5058



Early Music Society

OF THE ISLANDS

2016–2017



Early Music Society
OF THE ISLANDS
2016–2017 CONCERT SERIES

NB MASTERWORKS PROJECT

6 August 2016 Saturday 8pm Christ Church Cathedral

J.S. Bach: Mass in B Minor
Arion Baroque Orchestra MONTREAL
Alexander Weimann, music director
Yulia Van Doren, Shannon Mercer, Krisztina Szabo,
Laura Pudwell, Charles Daniels, Phillippe Gagné,
Christian Immler, Sumner Thompson

Bach spent the last years of his life creating the magnificent Mass in B Minor. This performance is with full Baroque orchestra, eight internationally renowned soloists and a professional chorus.

dash, panache, and impeccable timing...outstanding.
ARTS & OPINION

NB MASTERWORKS PROJECT

17 September 2016 Saturday 8pm Christ Church Cathedral

Handel and his Rivals: Opera Arias from 18th century London
Amanda Forsythe, soprano USA
Pacific Baroque Orchestra
Alexander Weimann, music director

Possessed of astounding technique, deep musicality and undeniable charm, the young American lyric soprano Amanda Forsythe has taken the world of early music by storm. Works by Handel and rival composers from the “Opera of the Nobility” who briefly put him out of business—Porpora, Hasse and others.

Amanda Forsythe, possessor of a superb technique, was vocal and visual perfection. OPERA NEWS

The Northwest Baroque Masterworks Project, an initiative of EMSI and Early Music Vancouver, is a series of major works performed at various venues in the Pacific Northwest. Supported by Christ Church Cathedral.



Amanda Forsythe

29 October 2016 Saturday 8pm Alix Goolden Hall

Love Makes Me Sing in the French Style
musica fantasia
Julie Ryning, soprano and percussion
Katelyn Clark, clavicimbalum VANCOUVER

Courtly love in the 13th and 14th centuries is explored with works by Walther von der Vogelweide, trecento ballate from the Vatican Rossi Codex, virelai from the allegory *Le Roman de Fauvel*, and culminates with the gorgeous ballade *Tres douce dame que j'aour* by Guillaume de Machaut.

Ryning and Clark were mesmerizing, interpreting German and Catalan Medieval works alongside the Trecento. DIARI DEL PRIORAT



Fuoco E Cenere

26 November 2016 Saturday 8pm Alix Goolden Hall

Toque of the Town
Fuoco E Cenere FRANCE

A unique staged performance combines music of the French Baroque by Charpentier, Rameau, Marais, and Lully with acting and French cuisine. At the conclusion of the performance, the artists serve canapés prepared exclusively for the audience.

Dishing up platters of well simmered Baroque music—artfully slicing the ingredients into thin strips of staccato—and the whole served all with talent, humour and joie de vivre. What a marvelous idea... APPOGGIATURE

NB MASTERWORKS PROJECT

5 February 2017 Sunday matinée 3pm Alix Goolden Hall

Mozart and Le Mozart Noir
Pacific Baroque Orchestra
Monica Huggett, violin UK
Alexander Weimann, music director

Joseph Boulogne, Chevalier de Saint-Georges, the son of a slave, overcame obstacles of class, race and prejudice to become one of the greatest composers of his time, inspiring Mozart and Haydn. The concert includes several of his violin concertos, works by Mozart and one of Haydn's Paris Symphonies.

Musicianship that is not showy, just highly penetrating and accomplished. GRAMOPHONE

NB MASTERWORKS PROJECT

17 December 2016 Saturday 8pm Christ Church Cathedral

J.S. Bach: Magnificat
Alexander Weimann, music director
Molly Quinn, Danielle Sampson, Meg Bragle,
Aaron Sheehan, Jesse Blumberg VANCOUVER/USA

Five internationally renowned soloists, and a Baroque orchestra with three trumpets and timpani perform the Magnificat written for Christmas Vespers in 1723, Telemann's Concerto for Three Trumpets in D major, TWV 54 and Bach's beloved Cantata 140, *Wachet auf*.

The result was nothing less than splendid, one of the best musical treats of the holiday season.
THE VANCOUVER SUN

Stile Antico



SPECIAL EVENT

4 March 2017 Saturday 8pm Alix Goolden Hall

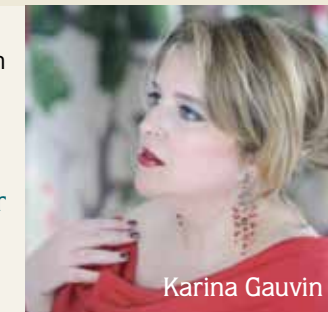
In a Strange Land: Elizabethan Composers in Exile
Stile Antico UK

Torn between conscience and obedience, Philips, Dering, and Dowland, several of England's greatest composers, chose a life of exile while others, Byrd and Robert White, remained at home in spiritual exile. The result was music of astonishing intensity and emotional impact.

...breathtaking freshness, vitality and balance. NYTIMES

29 April 2017 Saturday 8pm Alix Goolden Hall

The Purcell Project
Karina Gauvin, soprano
Francis Colpron, recorder and direction MONTREAL
Les Boréades de Montréal



Karina Gauvin

Canada's own superstar soprano joins forces with the exciting musicians of Les Boréades baroque orchestra to perform Henry Purcell's sacred and secular songs, some of the very finest in the English language.

Gauvin sings with passion, ingratiating charm, sincerity and utter conviction. INTERNATIONAL RECORD REVIEW

Ticket Order Form



Purchase 2016–17 Membership

	ADULT	FAMILY (2 adults)	SENIOR (65+)	STUDENT (full time with Student Card)	SUBTOTAL
	\$30x	\$50x	\$20x	\$10x	=

SUBSCRIPTION PRICING

	2016/17 MEMBER*	ADULT	SENIOR / STUDENT†	SUBTOTAL
Create your own subscription by selecting 5 or more concerts				
Handel & his Rivals	\$26.00x	\$31.50x	\$28.50x	=
Love Makes Me Sing	\$18.50x	\$24.50x	\$21.00x	=
Toque of the Town	\$18.50x	\$24.50x	\$21.00x	=
Bach Magnificat	\$26.00x	\$31.50x	\$28.50x	=
Locura & Tormenta	\$18.50x	\$24.50x	\$21.00x	=
Le Mozart Noir	\$26.00x	\$31.50x	\$28.50x	=
In a Strange Land	\$26.00x	\$31.50x	\$28.50x	=
The Purcell Project	\$18.50x	\$24.50x	\$21.00x	=

Extend your subscription

Bach Mass in B Minor \$26.00x \$31.50x \$28.50x =

SINGLE TICKET PRICING

	2016/17 MEMBER*	ADULT †	SENIOR † / STUDENT **	SUBTOTAL
Bach Mass in B Minor	\$28x	\$35x	\$30x	=
Handel & his Rivals	\$28x	\$35x	\$30x	=
Love Makes Me Sing	\$22x	\$30x	\$25x	=
Toque of the Town	\$22x	\$30x	\$25x	=
Bach Magnificat	\$28x	\$35x	\$30x	=
Locura & Tormenta	\$22x	\$30x	\$25x	=
Le Mozart Noir	\$28x	\$35x	\$30x	=
In a Strange Land	\$28x	\$35x	\$30x	=
The Purcell Project	\$22x	\$30x	\$25x	=

Operating Fund Donation (#118890367RR0001) =

EMSI Endowment Fund Donation =

Tax receipt for donations of \$10 or more.

- Keep my donation anonymous
- EMSI may list my/our name(s) as follows:

TOTAL =

* One member ticket (subscription or single) per member per concert. McPherson box office surcharge for members/subscribers subsidized by EMSI.
† Non-member pricing includes \$3.50 McPherson box office surcharge.
‡ Student rush tickets at the door (\$8/10) with student card.

Extra forms available at www.earlymusicsocietyoftheislands.ca